



This PDF is generated from authoritative online content, and is provided for convenience only. This PDF cannot be used for legal purposes. For authoritative understanding of what is and is not supported, always use the online content. To copy code samples, always use the online content.

# Voice Microservices Events and Models Reference

Handling user data

---

## Contents

- [1 Attaching or updating user data to internal call](#)
- [2 Attaching or updating user data to call by third party](#)

---

Learn how user data is handled in Voice Microservices.

**Related documentation:**

- 
- 
- 

**RSS:**

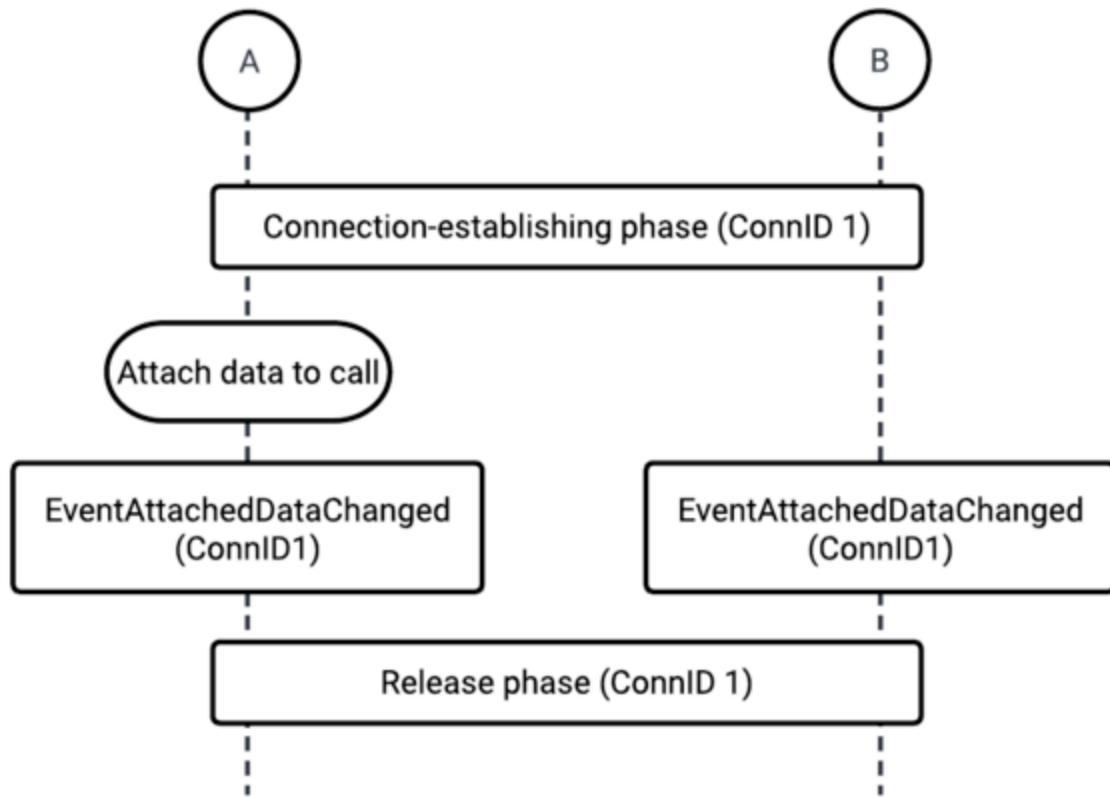
- [For private edition](#)

Voice Microservices support the scenarios described on this page. User data events are not produced to Kafka. User data attached to a call is available in call-related events.

## Attaching or updating user data to internal call

The following diagram and table describe attaching/updating user data to an internal call.

For simplicity, the following example uses ConnID 1, however - in actual events - the ConnID displays as ConnID>@metainformation>.

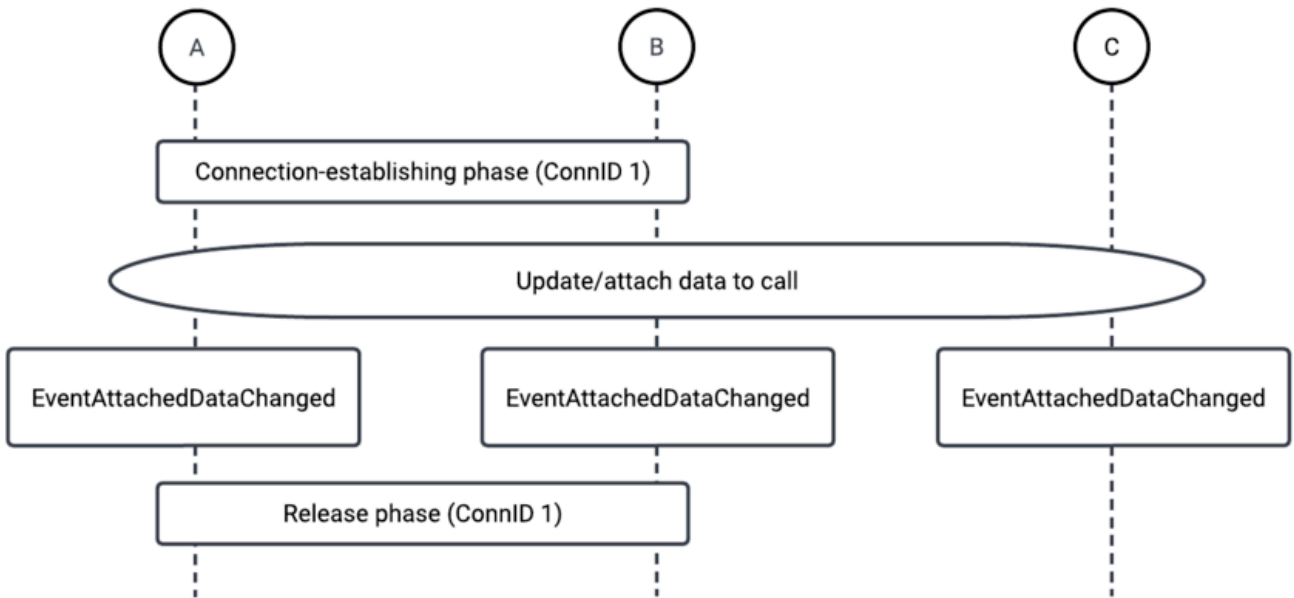


Party A	Party B
<b>Call-establishing phase (ConnID 1)</b>	
Attach user data to a call (TUpdateUserData)	
EventAttachedDataChanged:	EventAttachedDataChanged:
ConnID 1 ThisDN A ThirdPartyDN A	ConnID 1 ThisDN B ThirdPartyDN A
<b>Release phase (ConnID 1)</b>	

## Attaching or updating user data to call by third party

The following diagram and table describe attaching/updating user data to a call by a third party.

For simplicity, the following example uses ConnID 1, however - in actual events - the ConnID displays as ConnID>@metainformation>.



Party A	Party B	Party C
<b>Call-establishing phase (ConnID 1)</b>		
		Attach user data to a call (TUpdateUserData)
EventAttachedDataChanged: ConnID <b>1</b> ThisDN <b>A</b> ThirdPartyDN <b>C</b>	EventAttachedDataChanged: ConnID <b>1</b> ThisDN <b>B</b> ThirdPartyDN <b>C</b>	EventAttachedDataChanged: ConnID <b>1</b> ThirdPartyDN <b>C</b>
<b>Release phase (ConnID 1)</b>		