



This PDF is generated from authoritative online content, and is provided for convenience only. This PDF cannot be used for legal purposes. For authoritative understanding of what is and is not supported, always use the online content. To copy code samples, always use the online content.

Genesys Predictive Routing Help

Contents

- [1 Overview](#)
- [2 What do you want to do?](#)
- [3 Looking for something else?](#)
- [4 Navigating the Predictive Routing interface](#)
- [5 Navigating this Help](#)

This Help explains how ADMIN and REVIEWER users can access the Genesys Predictive Routing (GPR) web application for the following tasks:

- (ADMIN users) Configure your account password policies and manage users.
- Reset your password.
- View Feature Coverage and Model Accuracy reports for your predictors.

Related documentation:

-

Overview

Genesys Predictive Routing (GPR) draws on accumulated agent, customer, and interaction data to score each agent for how well that agent can handle a specific interaction. GPR can do the following:

- Determine the best possible match between waiting interactions and available agents and then route the interactions so as to optimize your selected KPIs.
- Take account of whether scores should be higher than a certain threshold in order to be routed. You can have interactions wait for a better-matching agent or reduce the minimum required score over time.
- Set higher priority interactions to be routed first, even if they score lower than other waiting interactions.
- Report on the predicted versus actual outcomes. GPR uses the actual outcome to further train the machine-learning model, improving the accuracy of predicted outcomes between similar customer profiles and agent profiles.

GPR operates as a managed service, so most deployment and configuration is handled by Genesys. If you have questions about how your account is set up, contact your Genesys representative.

For basic navigation tips, see the following topics:

- How do I navigate the GPR user interface?
- How do I navigate the Help?

What do you want to do?

- (ADMIN) Configure password policies for your account.
- (ADMIN) Add users and manage role assignments.
- Reset your password.

-
- Monitor predictor feature coverage.
 - View model accuracy graphs.

Important

- The Predictive Routing interface as shown in this Help might include features or settings that do not apply to your contact center or your user role.

Looking for something else?

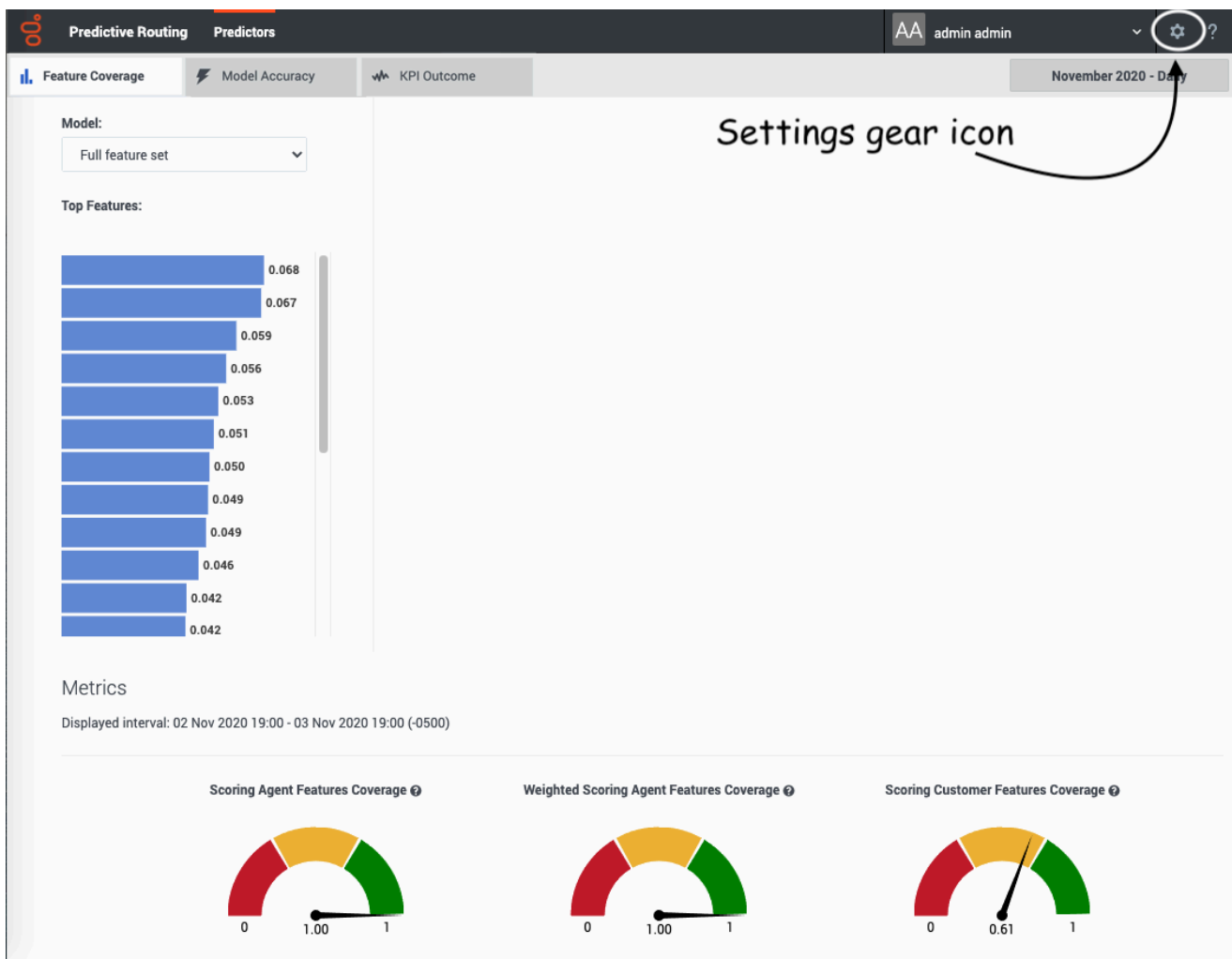
You might also find the following information of use:

Genesys Predictive Routing Deployment and Operations Guide enables you to plan, set up, and maintain the Data Loader and URS Strategy Subroutines components deployed in your hybrid Genesys Predictive Routing (GPR) environment.


You can find GPR Release Notes in the following places:

- Predictive Routing RN for Genesys Multicloud CX
- Release Notes for all GPR on-premises components

Navigating the Predictive Routing interface



The Predictive Routing user interface opens to the Feature Coverage tab.

- Click the Model Accuracy tab to a chart showing how well your models are predicting the outcomes of agent-interaction matchups, compared with actual data.
- To view password, account, and user settings, click the gear icon  on the right side of the top navigation bar.

For security reasons, the GPR web application logs out inactive users. This functionality works in the following way:

- If you do not perform any action in the GPR browser window for 14 minutes, an inactivity alert opens and displays a 60-second countdown timer.
- If you then perform any action, such as scrolling, moving or clicking your mouse, or entering keystrokes from your keyboard, the inactivity timer disappears and your session continues.
- If you do nothing, your session ends after the 60-second timer expires and you GPR automatically logs you out.